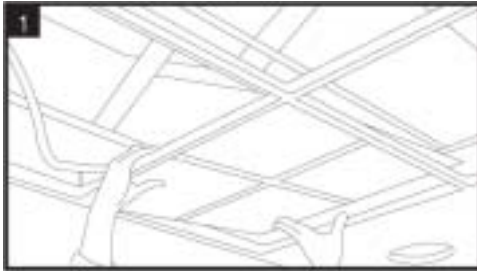
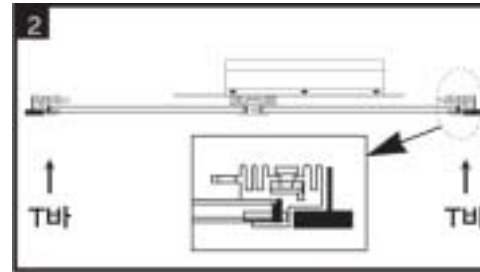


Installation method of IK (Installation Kit) series

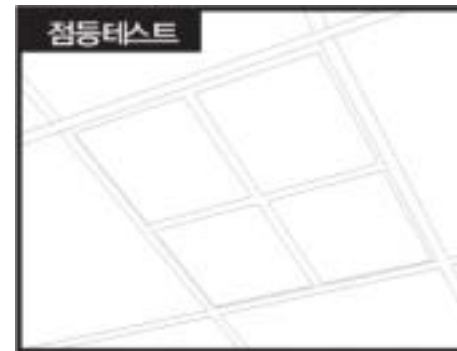
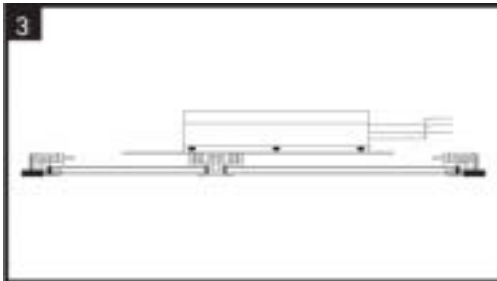
IK01-Drop Ceiling



① T-Bar에 제품을 얹는다.



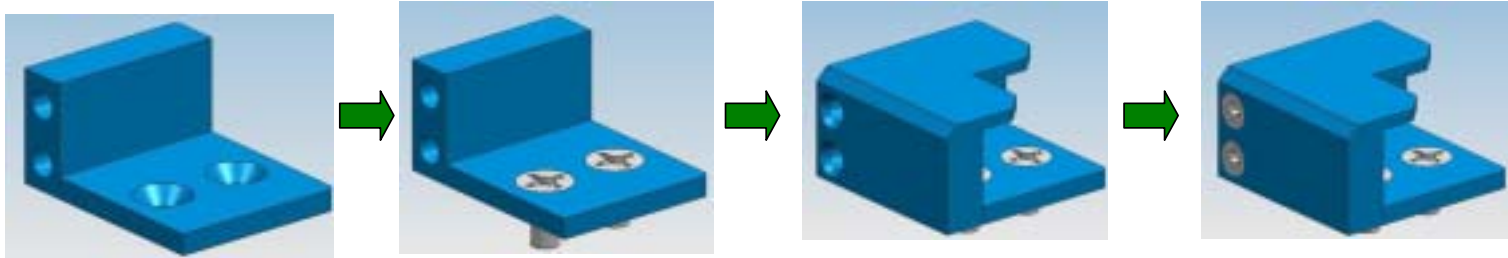
② T-Bar에 얹혀진 상태를 확인한다.



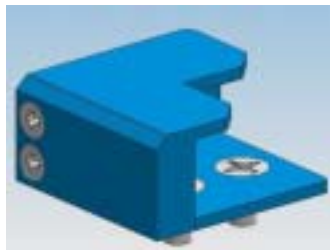
④ 점등테스트

IK02-Point Bracket 32*32*18mm (내부 높이 : 13mm)

1. IK02-Assembly



2. IK02-View



3D view



Top View

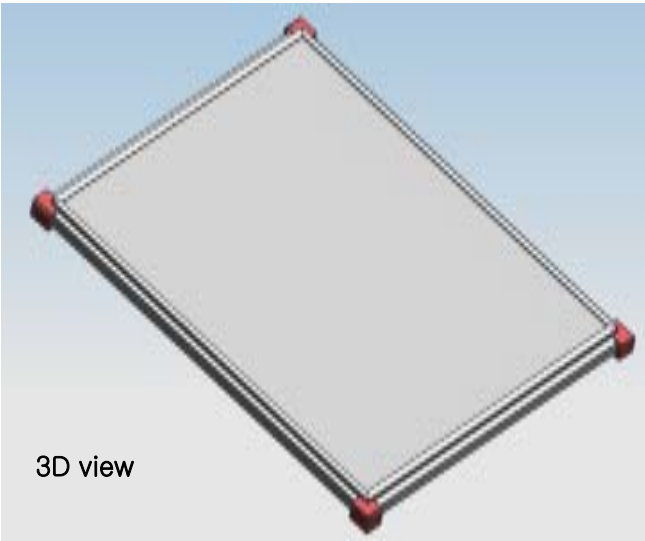


Front View

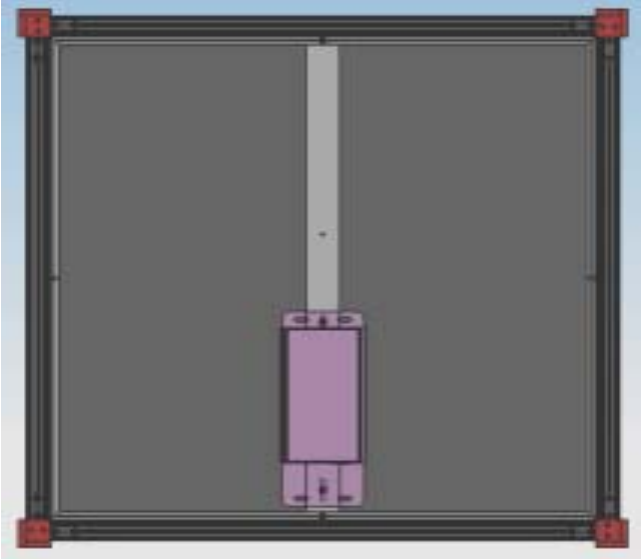


Bottom View

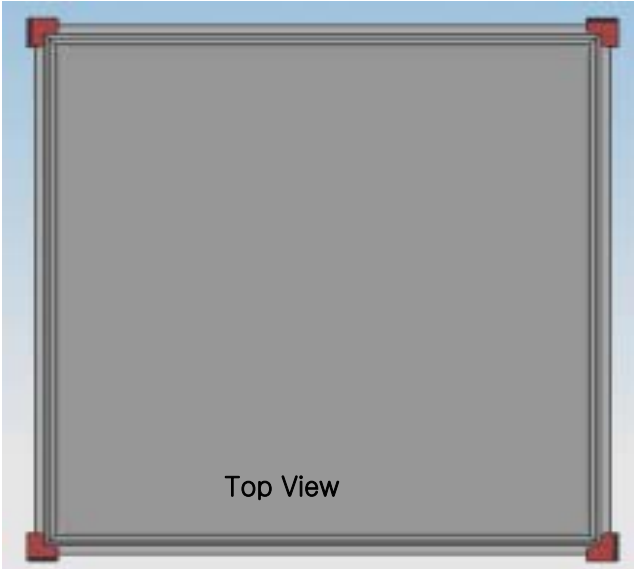
IK02-Point Bracket-Application



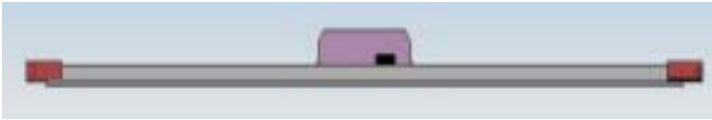
3D view



Bottom View

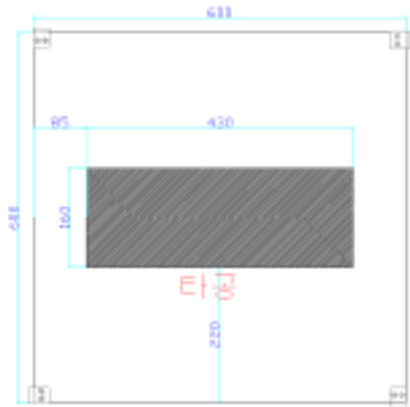
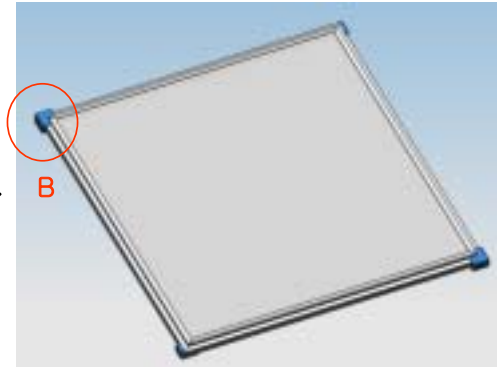
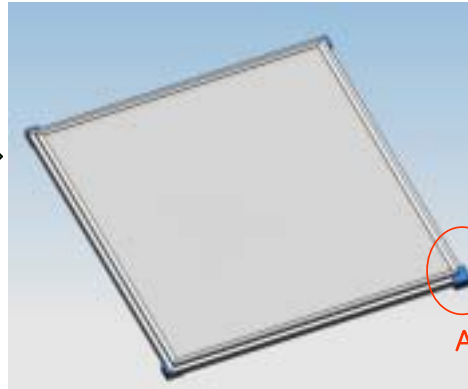
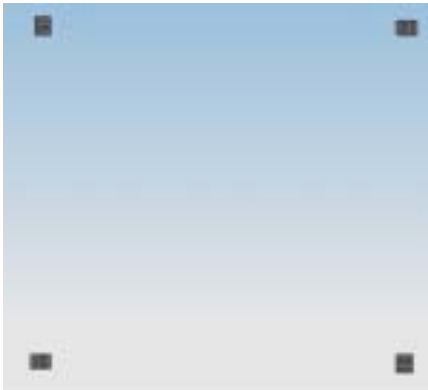


Top View



Front View

The process of IK02-Point Bracket Assembling



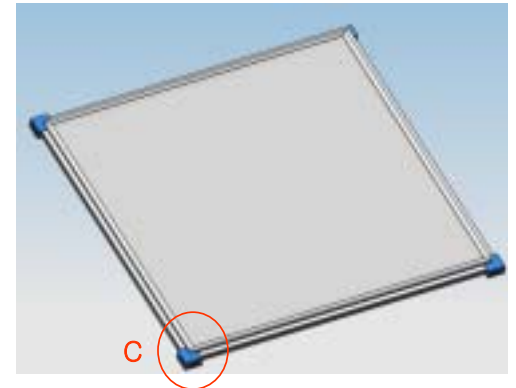
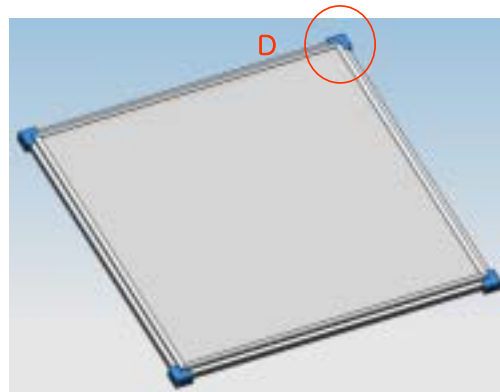
① Make the four corners of the FLL outline on the ceiling with size of 600x600mm.

Make an opening in the ceiling to fit the PSU with size of 160x430mm.

Fix the bottom part of IK02 to the marked point on the ceiling.

② Assemble ONE IK02 top part bracket to the bottom bracket on the ceiling and insert the product as shown above A.

③ Install the diagonally opposite bracket as shown above B

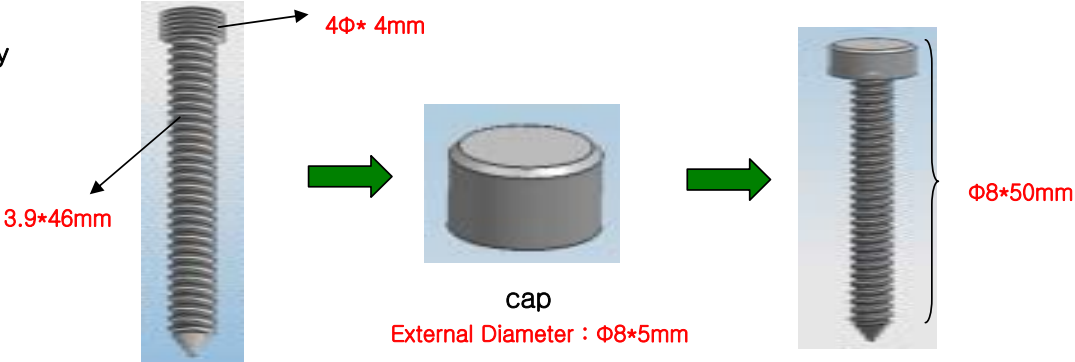


⑤ Repeat the same process for the corner D

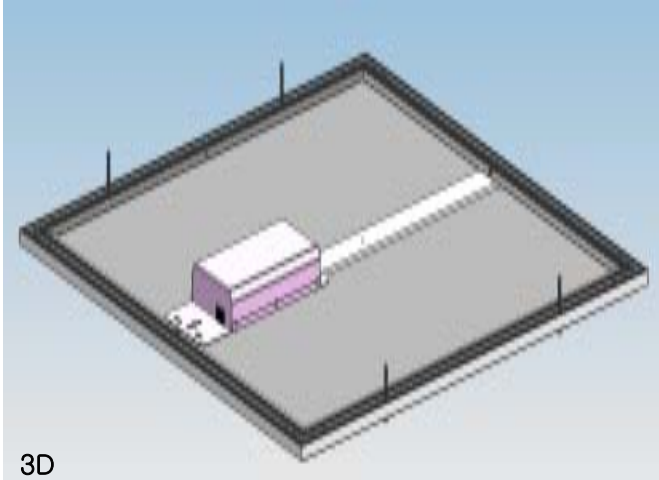
④ Repeat the same process for the corner C

IK03-Hole & Screw, cap-Application

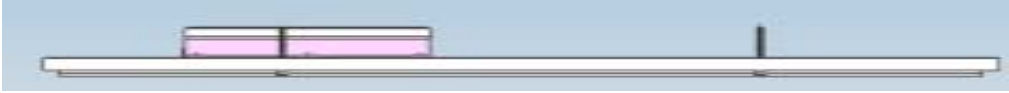
1. IK03-Assembly



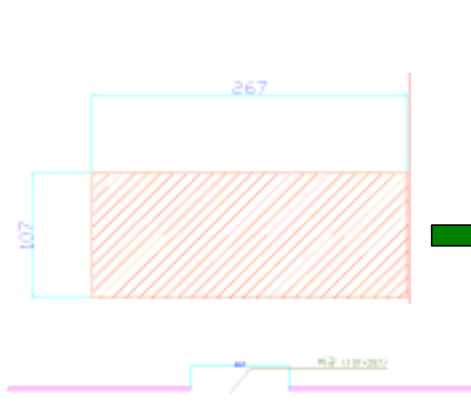
2. View of Product Application



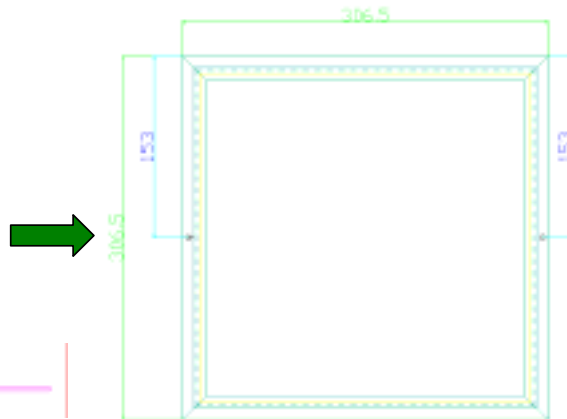
Front



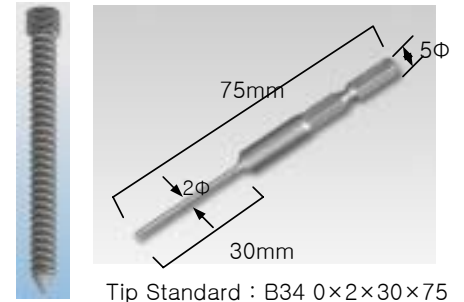
The Procedure of Assembling R13TD and IK03-Hole & Screw, cap



① Make an opening on the ceiling like the size shown above.

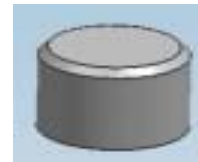


- ② Make an hole in the center of frame which is 306.5mm length. The hole is located about 153mm away from the end with 4.2Φ in size.
- ③ Put a mark on the ceiling where the hole of frame is matching to drive IK03-screw.
- ④ In advance, make an hole to the marked point on the ceiling with the size of $2.5\Phi\sim 3\Phi$ to drill easily.



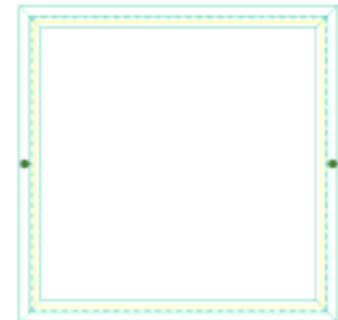
Tip Standard : B34 0×2×30×75

⑤ Like drawing, put IK03-screw to the drilled hole on the product and drive screw by using smoothly the electric screwdriver in torque 1. The tip standard of electric screwdriver is B34 0x2x30x75.(It is recommended to use standard one to avoid the problem caused easily by small screw tip.) The size of head part of tip is only 5Φ so please be careful not to be inserted inside the hole.

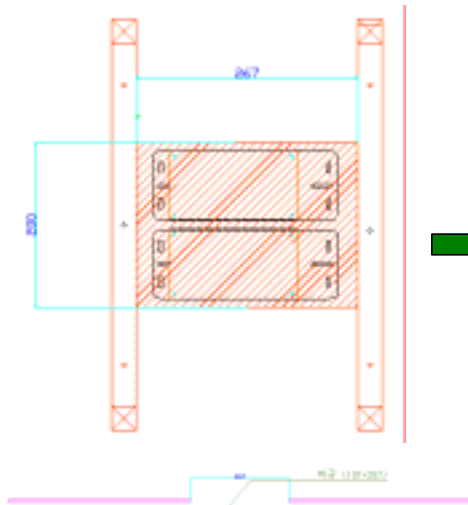


IK03-cap

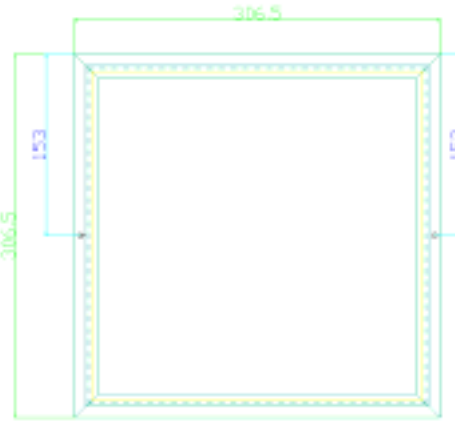
⑥ After driving all of IK03-screws, complete the work with IK03-cap.



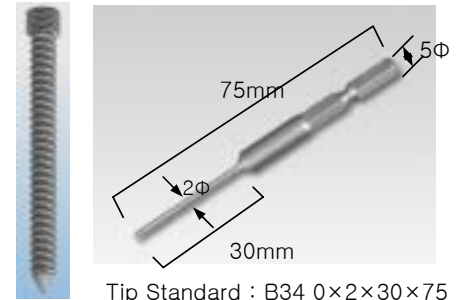
The Procedure of assembling R13TE and IK03-Hole & Screw, cap



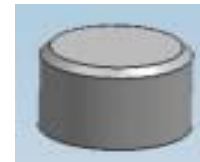
① Make an opening on the ceiling like the size shown above.



- ② Make an hole in the center of frame which is 306.5mm length. The hole is located about 153mm away from the end with 4.2Φ in size.
- ③ Put a mark on the ceiling where the hole of frame is matching to drive IK03-screw
- ④ In advance, make an hole to the marked point on the ceiling with the size of $2.5\Phi\sim 3\Phi$ to drill easily.

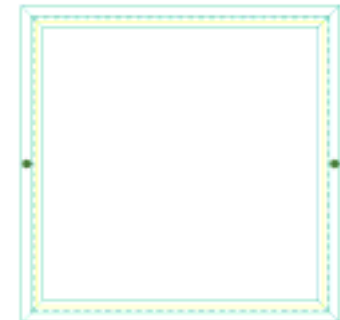


- ⑤ Like drawing, put IK03-screw to the drilled hole on the product and drive screw by using smoothly the electric screwdriver in torque 1. The tip standard of electric screwdriver is B34 0x2x30x75. (It is recommended to use standard one to avoid the problem caused easily by small screw tip.) The size of head part of tip is only 5Φ so please be careful not to be inserted inside the hole.

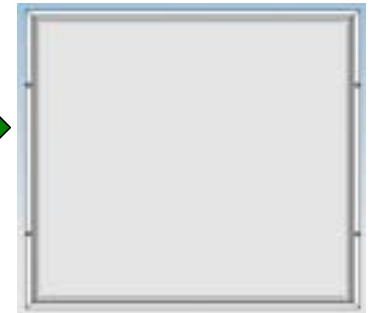
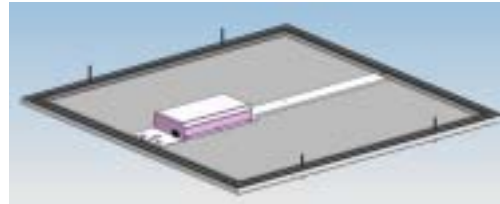
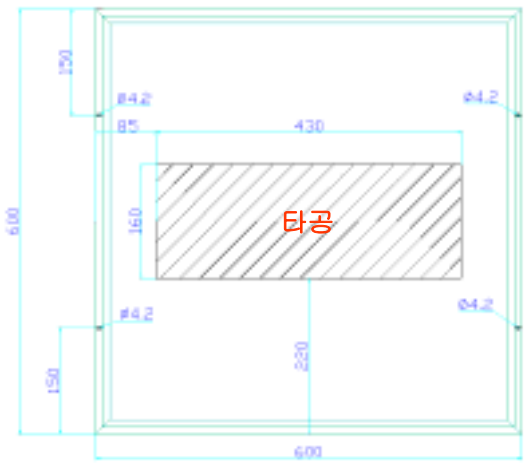


IK03-cap

- ⑥ After driving all of IK03-screws, complete the work with IK03-cap.



The Procedure of Assembling IK03-Hole & Screw, cap



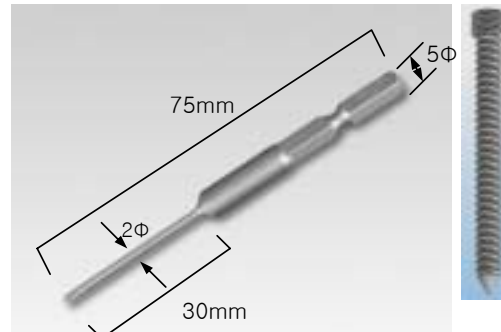
⑤ 그림과 같이 IK03-screw를 이용하여 제품에 hole이 뚫어져 있는 부분에 천천히 고정 시킨다.

<주의>

전동드라이버 torque : 1 또는 수동 드라이버사용
Tip규격 : B34 0×2×30×75

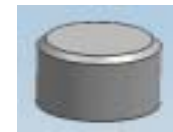
⑥ 그림과 같이 IK03-screw 위에 IK03-cap으로 마무리 한다.

- ① 천장에 160×430mm(공차+10mm) 사이즈로 타공을 한다.
- ② 제품에 4.2φ로 그림과 같은 위치에 hole을 뚫는다.
- ③ 제품에 hole을 뚫은 그 위치에 IK03-screw를 박기 위해 표시를 한다.
- ④ IK03-screw를 쉽게 박기 위해서 위해 표시한 부분에 2.5φ~3φ drill로 천장에 구멍을 낸다.



Tip규격 : B34 0×2×30×75

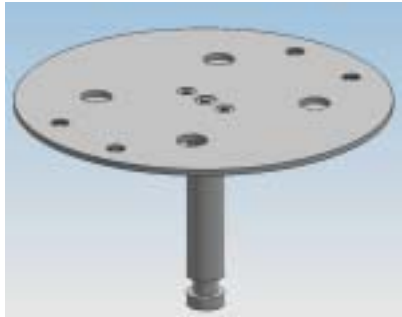
IK03-screw



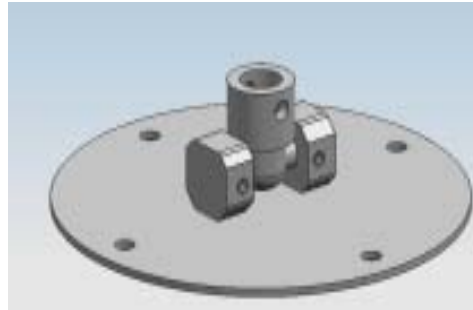
IK03-cap

IK04-Moving Bracket 120Φ*90.5mm

1. IK04-Assembly



IK04-top(Installation parts to the ceiling)

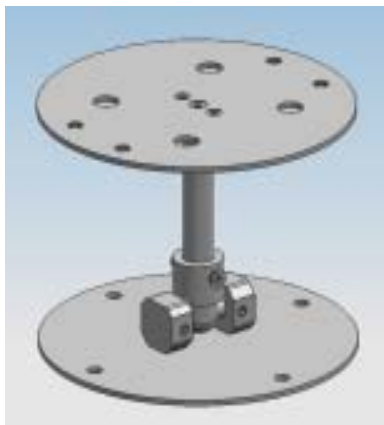


IK04-Bottom(Installation parts to the light)

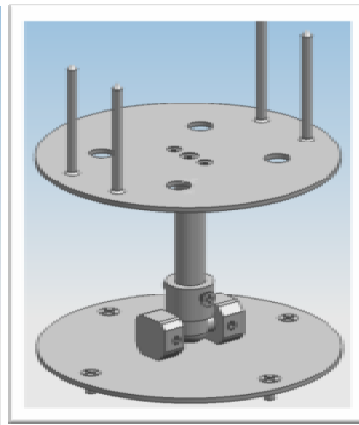


Assembled feature

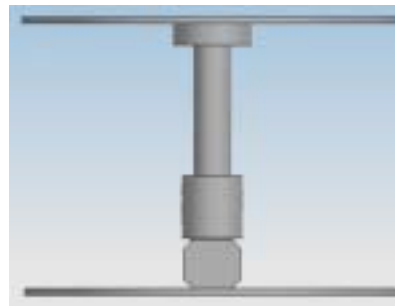
2. IK04-View



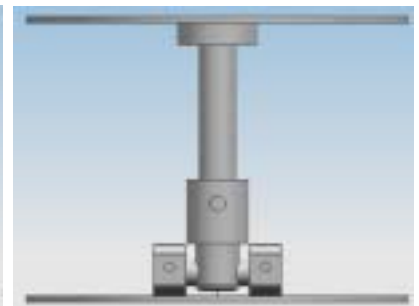
3D view-Before screwing



3D view-After screwing

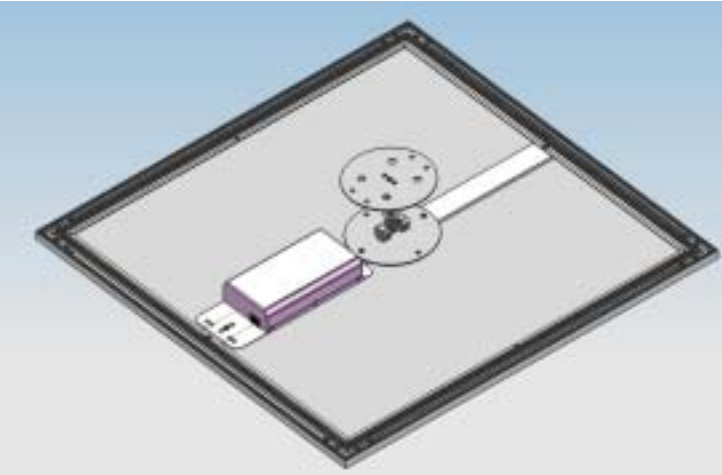


Right View

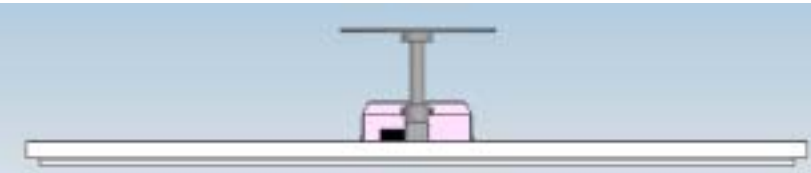


Front View

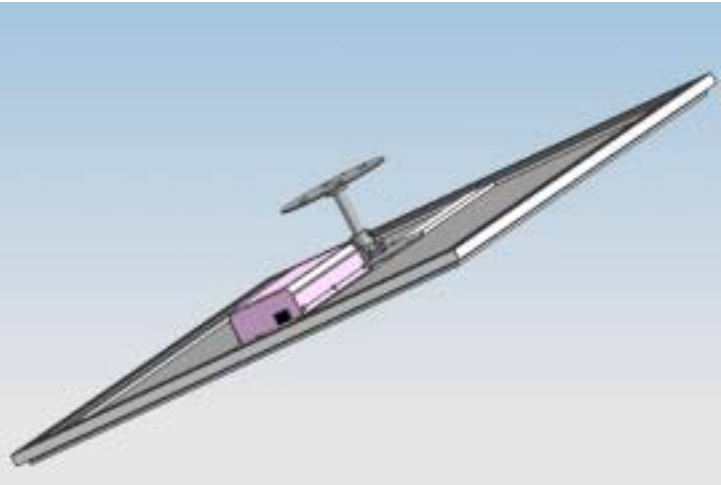
IK04-Moving Bracket



Product Application –Bottom view

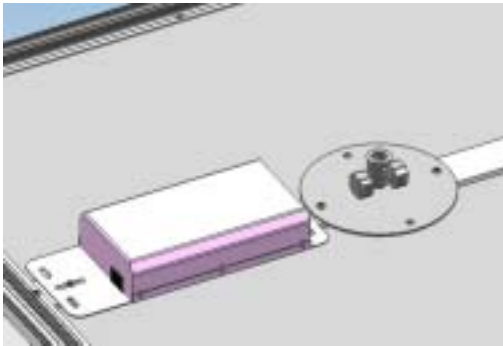


Product Application–Front View

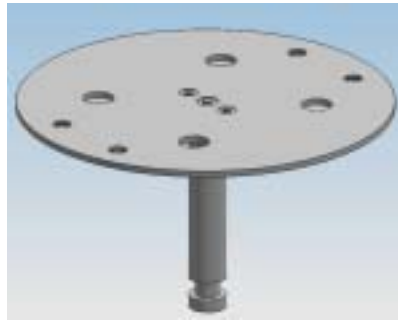


Product Application–3D view

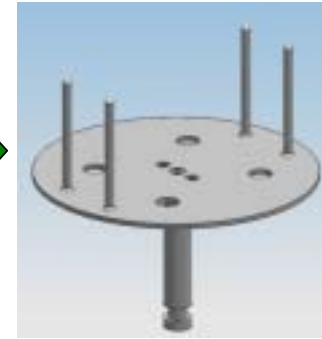
IK04-Moving Bracket 제품 ass'y 순서



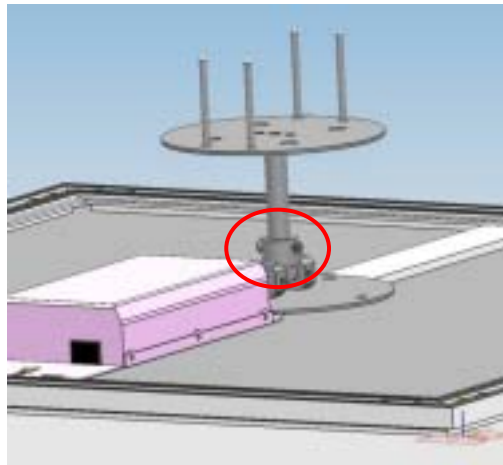
Fasten IK04-Bottom to the light module.
<Caution> The direction of screwing part for bottom and top of IK04 should be placed **vertically** that of PSU.
Should be installed like picture!



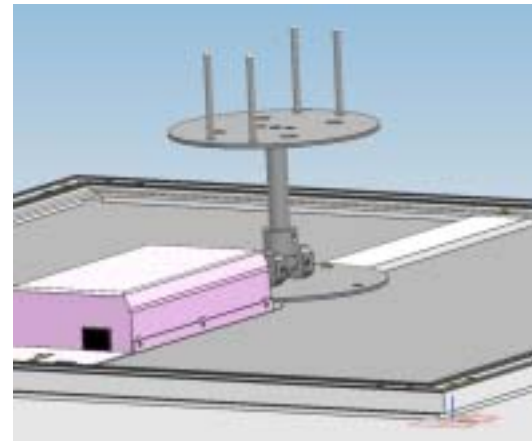
Positioning top of IK04 on the ceiling where you are willing to install the light module.



Fix top of IK04 by straight screw



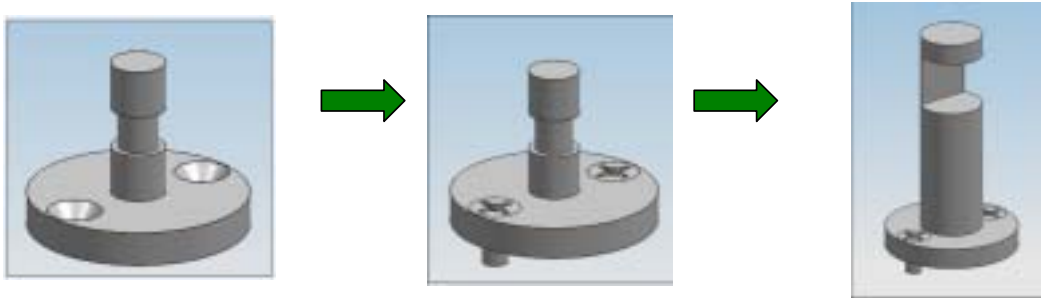
Tighten the M5 screw at both side.



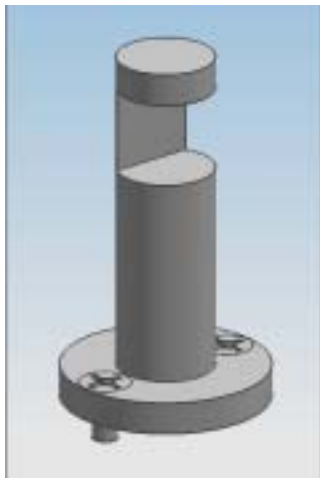
Insert bottom of IK04 on the light module to the top of IK04 on the ceiling.

IK06-Super Bracket 32Φ*55mm

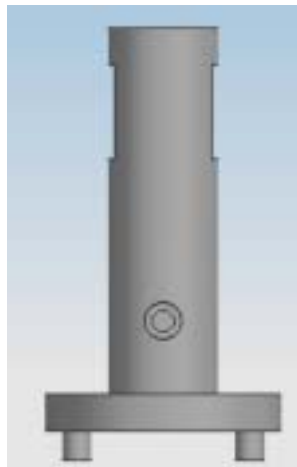
1. IK06-Assembly



2. IK06-View



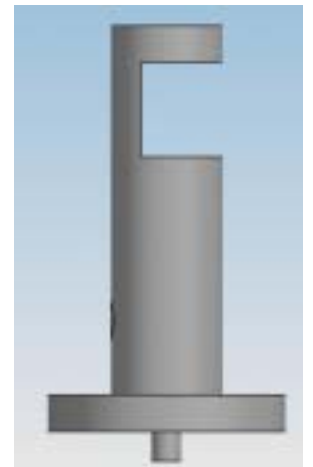
3D view



Back

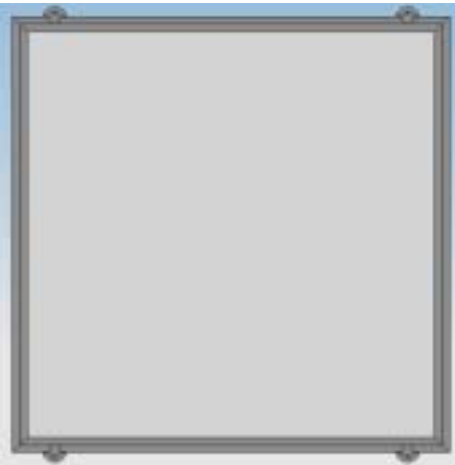


Front

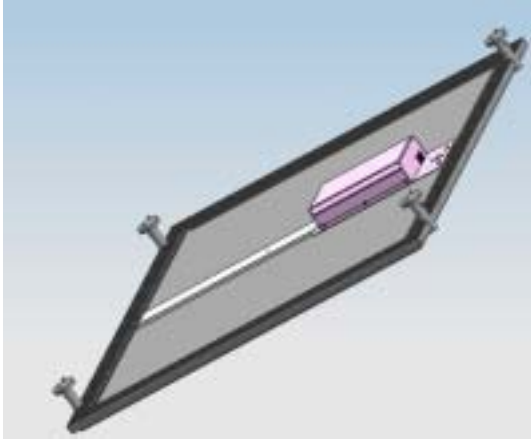


Right

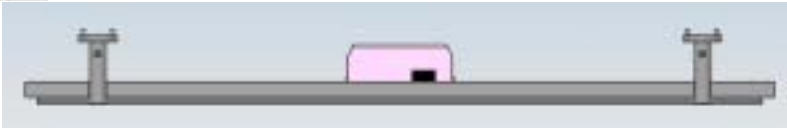
IK06-Super Bracket-Application



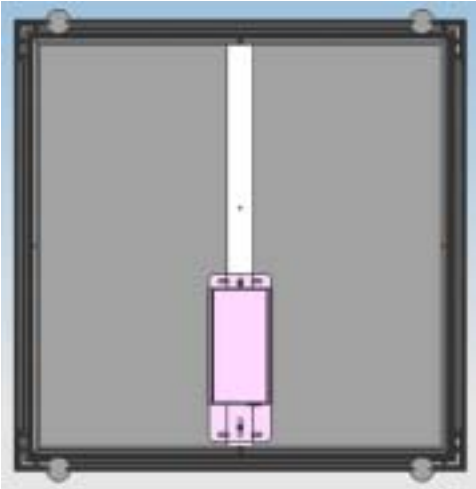
Product Application-Top View



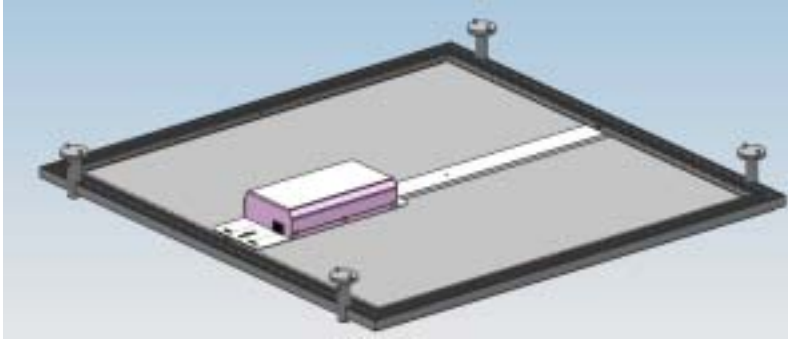
Product Application-3D View



Product Application-Front View

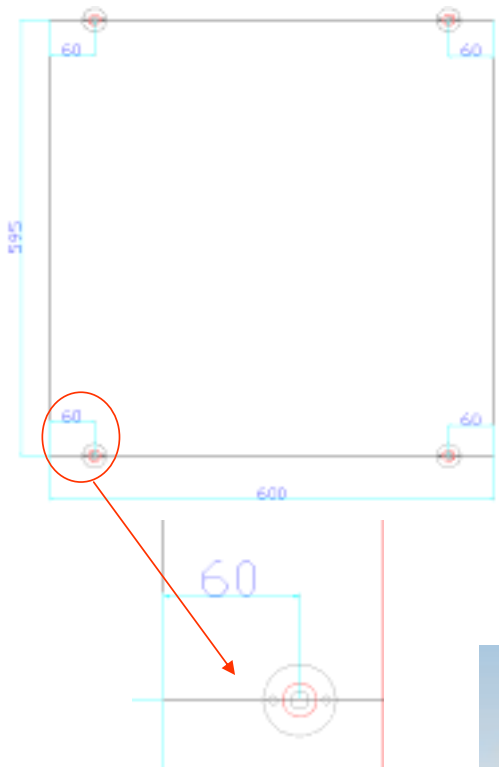


Product Application-Bottom View



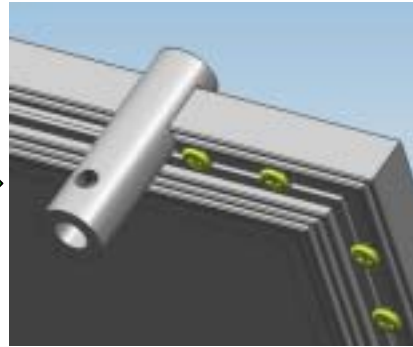
Product Application-3D View

The Procedure of Assembling IK06-Super Bracket

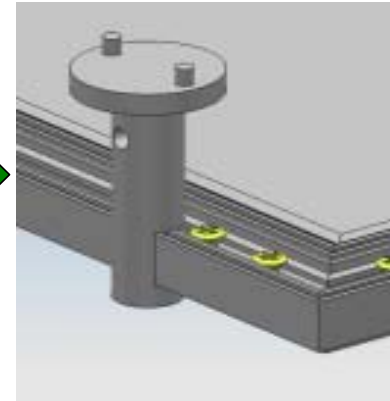


① Fasten the bottom part of IK06 to the ceiling as shown above drawing by using the straight screw .

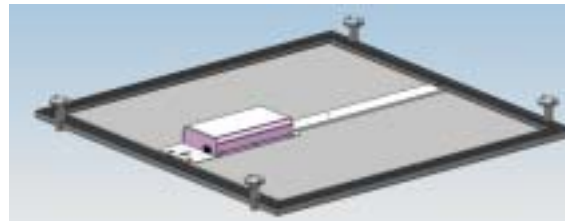
<Caution> As like enlarged part of drawing above, the center of hole for screw should be aligned to the line



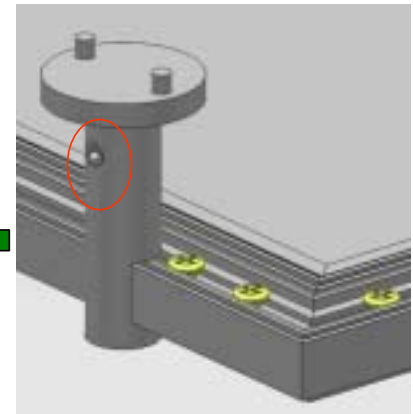
② Insert top part of IK06 to the product.



③ Assemble the bottom part of IK06 from the ceiling to the top part of IK06.

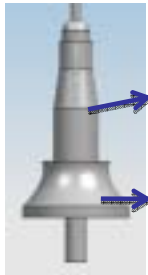


⑤ Drawing of completed product using IK06.

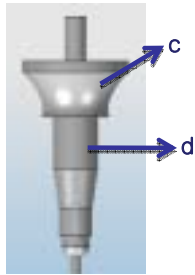


④ It is necessary to use M5 lens to Assemble the top and bottom part of IK06.

IK05-A Wire Pendant

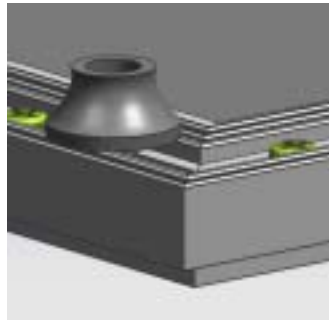


Wire pendant-A
for light module



Wire pendant
for ceiling

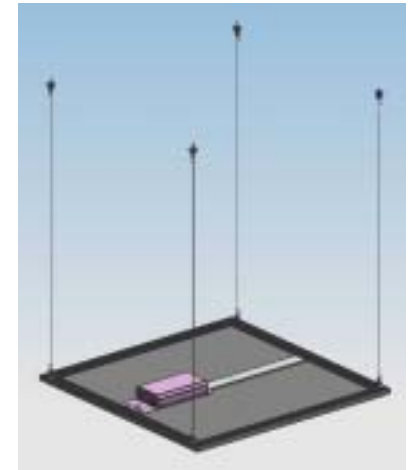
1. IK05-A-Assembly



① After unfastening one bolt from “ \sqcap ” shaped bracket in each corner, fix “a” by using M4*10mm flat head screw.



② “a” is need to be fasten by “b” which has been connected from the wire pendant for the ceiling(c+d) by wire.



③ Drawing of complete product using IK05-A

IK05-B Wire Pendant

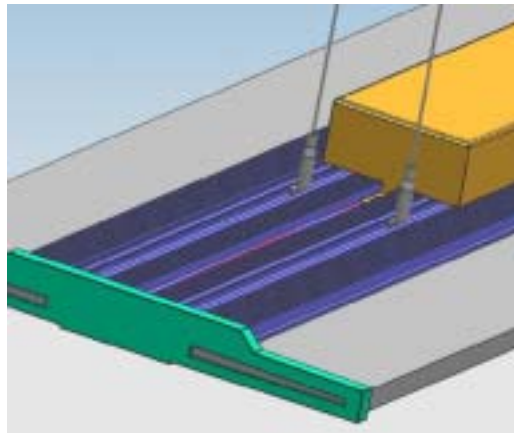


Wire pendant-B
for ling module

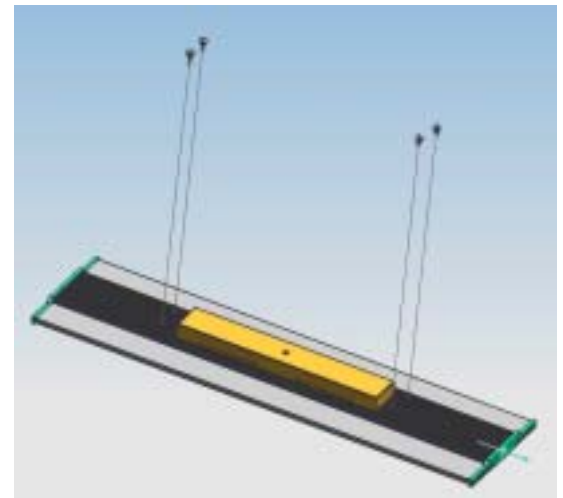


Wire pendant
for ceiling

1. IK05-B-Assembly



① Insert wire pendant-B for light module to the frame of light and be careful not to be taken off from the frame.



② Connect wire pendant-B to the wire pendant for ceiling that has been already installed on the ceiling.

IK07-Pendant

1. IK07-assembly



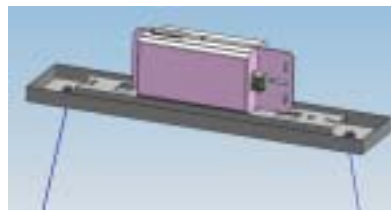
+



+



+



=

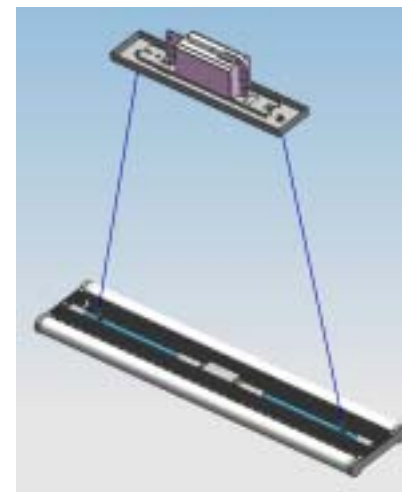
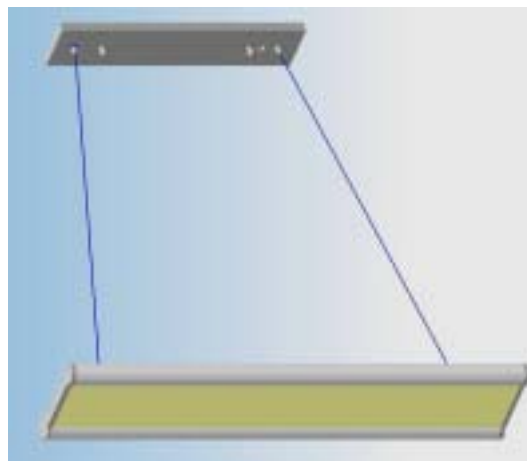


Pendant for
light module

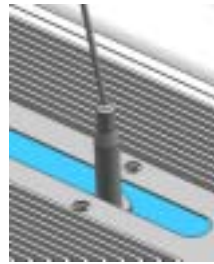
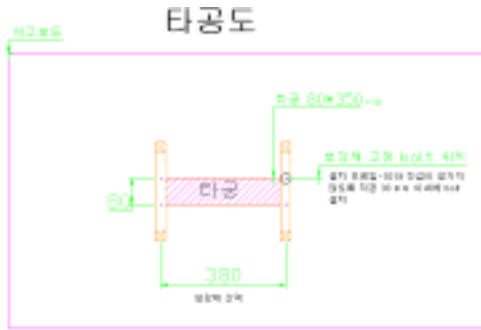
Frame for ceiling-02

Frame for ceiling-01

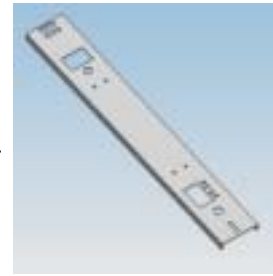
2. Product Application-3D view



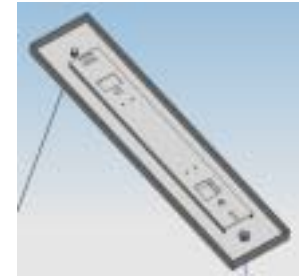
IK07-Pendant- 제품 ass'y 순서



② Fix the wire bracket for fastening the product to the light module.

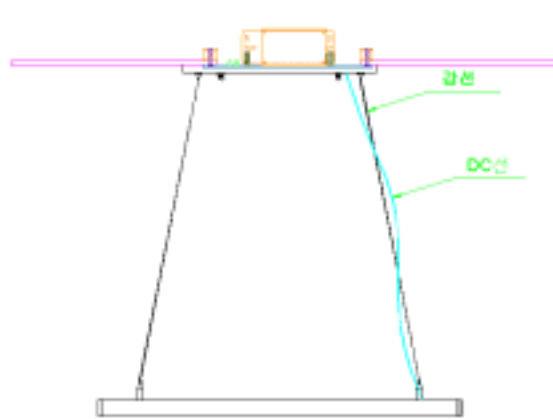
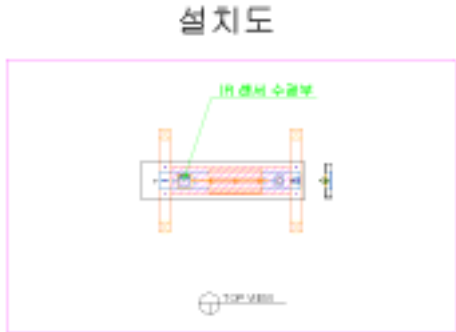


③ After fixing the PSU to the frame for ceiling-02, assemble this fixture to the support bar.



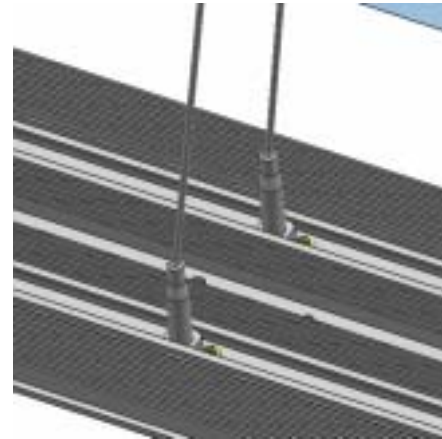
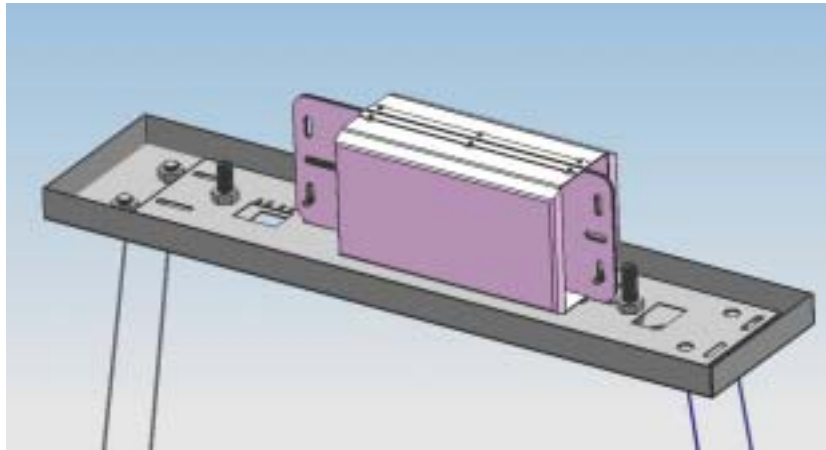
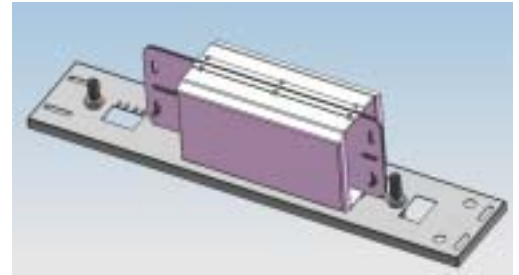
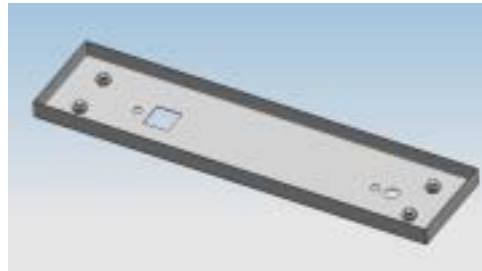
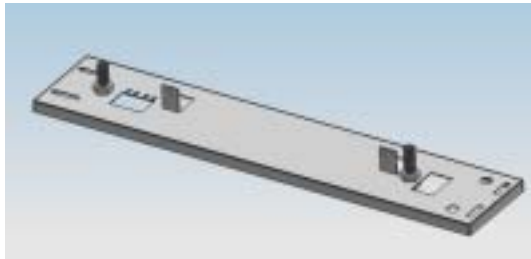
④ After connection the PSU DC terminal to the wire from frame for ceiling, fix those fixture to the frame for ceiling-02.

1. Make opening on the ceiling with size of 80*350mm
2. Fasten the support bar that can endure total weight of 6Kg.

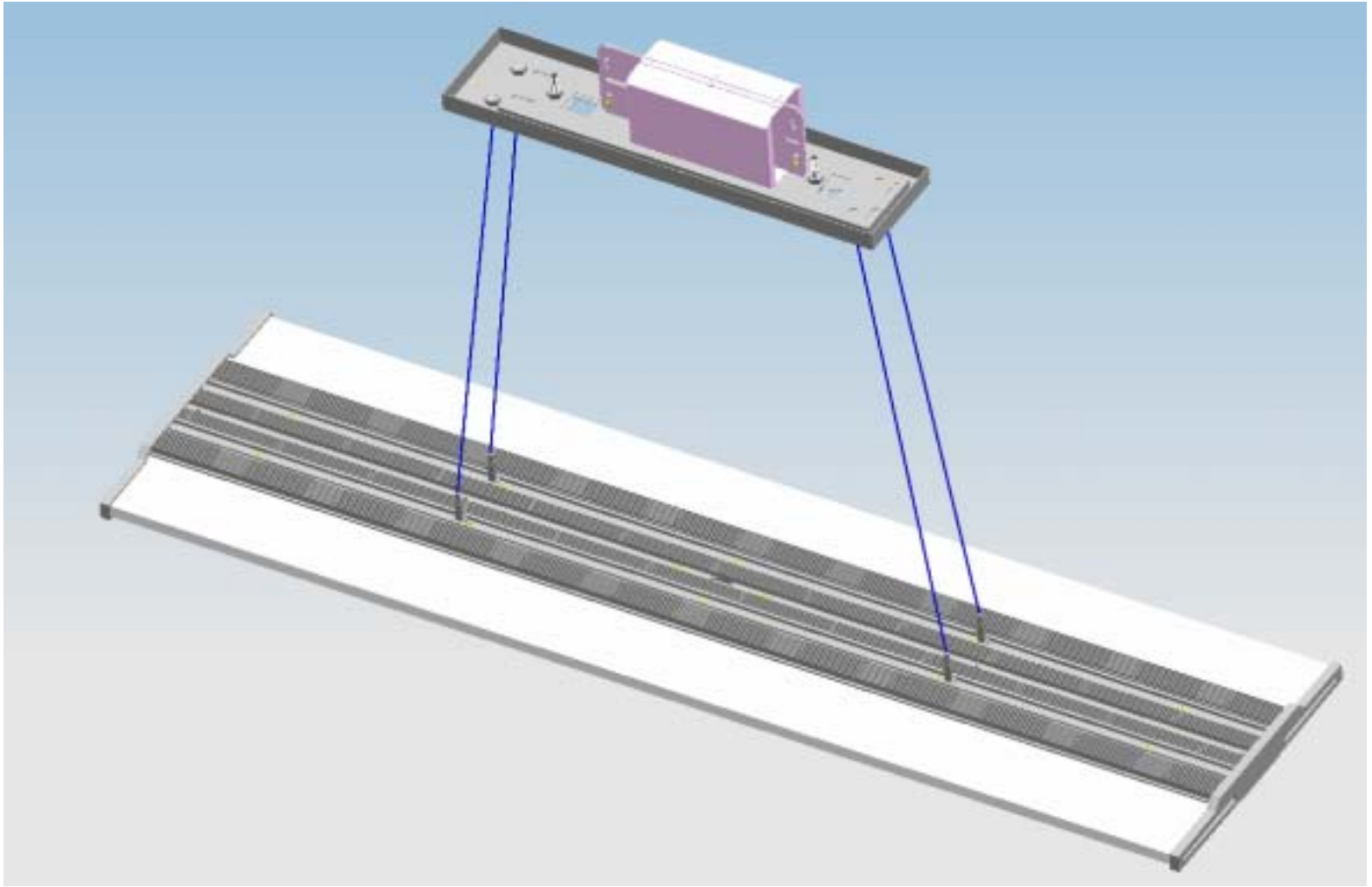


- ④ Connect frame for ceiling-01 to the steel string on the product.
- ⑤ Connect the DC wire from frame for ceiling-01 to the product.

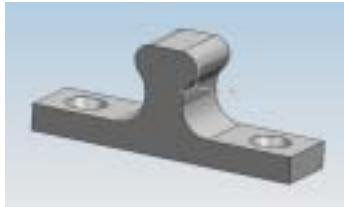
IK07-B Pendant



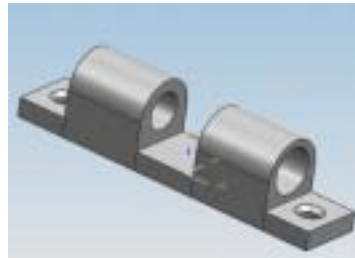
Product Application of IK07-B Pendant+ N02



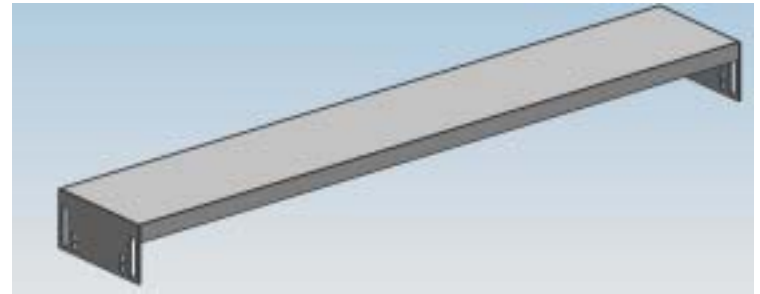
IK08-Click Bracket



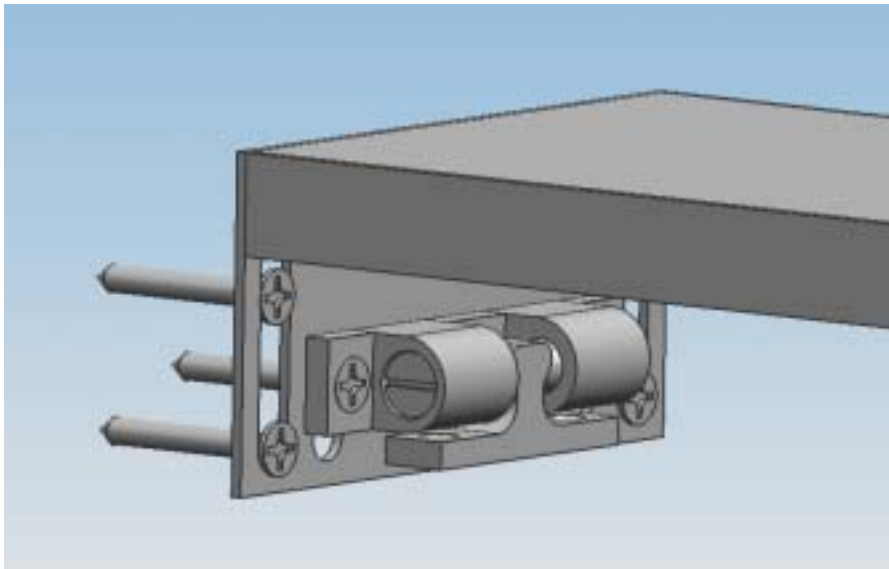
IK08-Bracket1



IK08-Bracket2

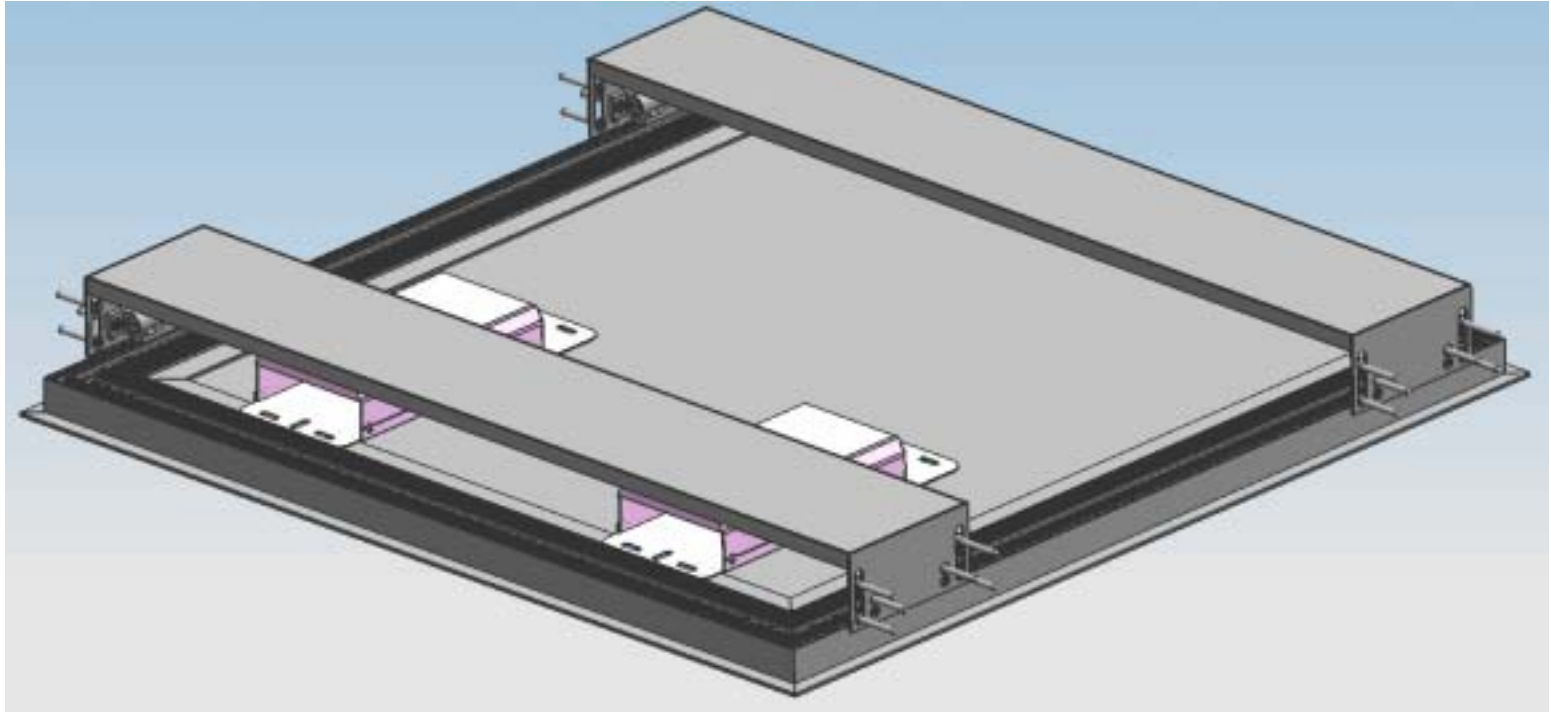


IK08-Ganagu

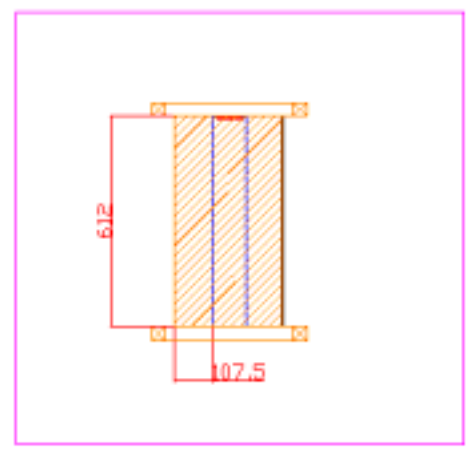


IK08-Click Bracket assy

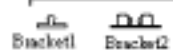
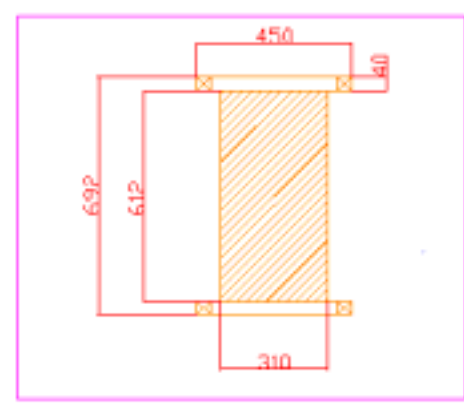
IK08-Click Bracket + R04RE



설치도



타공도



Ganagu


Index

설치 순서

1. 310+612mm로 타공한다.
2. 40+40+450mm의 보강목 고정한다.
3. 설치도에 따라 Ganagu를 보강목에 고정한다.
4. Bracket1은 제품에 고정되어 있으므로 별도로 고정할 필요 없음.
5. 설치도에 따라 Ganagu를 설치한 후 Bracket2를 Ganagu hole에 고정하고 직결나사를 이용하여 보강목에 고정한다.
6. PSU DC단과 현장의 AC선를 연결한다.
7. 제품에 연결된 강선을 Ganagu에 걸친 후 다시 제품과 연결하여 고정한다.

- 보강목 size : 단면 40+40, 길이 450이상 500 이하로 작업
- 보강목 고정 : 보강목 고정은 bolt 혹은 작업자에 따라 타커로 고정
- 타공 sbe : 310+612 기준으로 하며, 공차는 +5mm, -0으로 타공
- Ganagu를 설치할 경우 높이 공차는 +3mm, -0으로 설치.

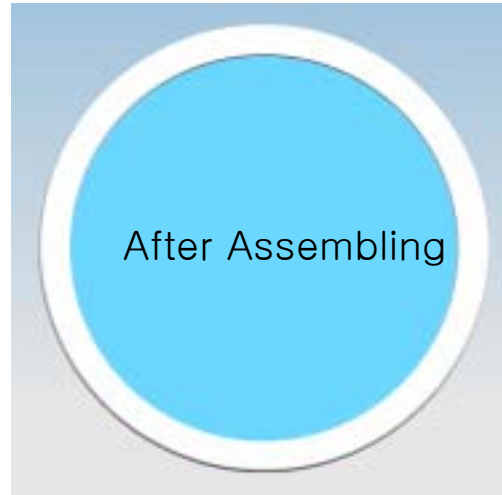
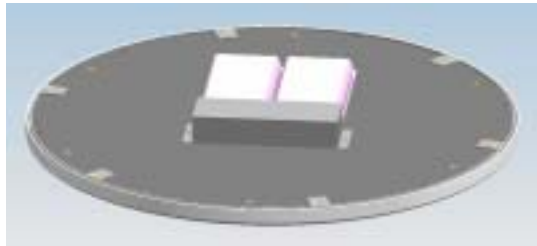
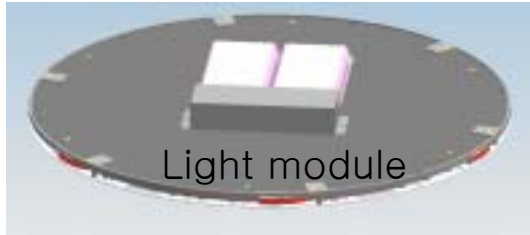


Designed by SS 2008	Checked by CY 2008	Approved by - Date 2008.05.21	File name KF-E-01-05_01.dwg	File Date 2008.05.21	Scale 1:1
			KDT 모든 기밀 정보 비공개		
			NO. KF-E-01-01-01	Edits 0	Sheet 1/1

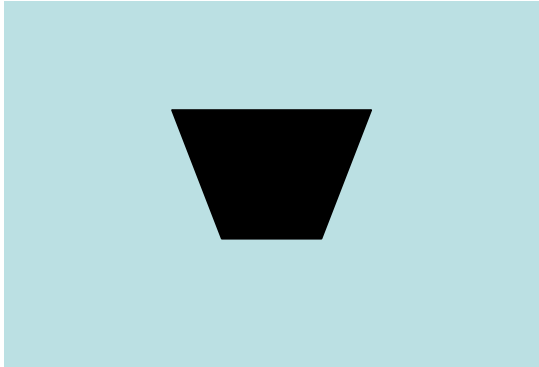
Index

Procedure of installation

1. Make an opening on the ceiling with the size of 310x612mm.
2. Fix 40*40*450 size support bar which is made of wood for reinforcement
3. According to the installation layout, fix a GANAGU to the support bar
4. Additional fixation is not necessary for bracket 1 because it has already fixed to our product.
5. Placing the GANAGU according to the installation layout. Fix a bracket 2 to the hole in GANAGU and tighten this with support bar by using straight screw.
6. Connect AC wire from the ceiling to the DC wire of power supply unit.
7. After being laid across the steel string that is fastened to the product to GANAGU, connect again with the product and fix this.



1. The shape of opening on the ceiling to place PSU in it



2. 6 spots for the tightening with straight screws



3. Installation of skin: turn the skin with a click.



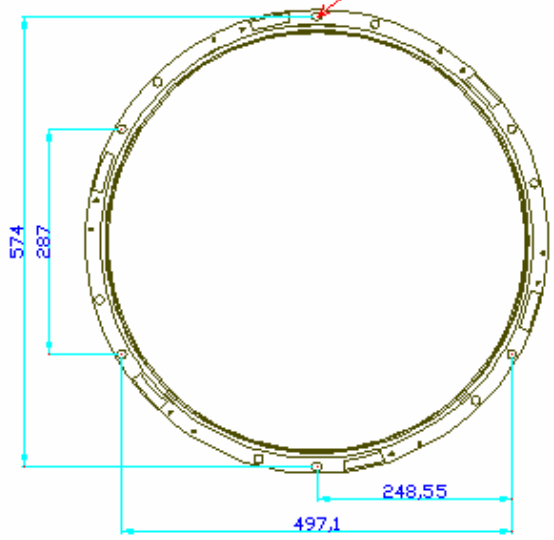
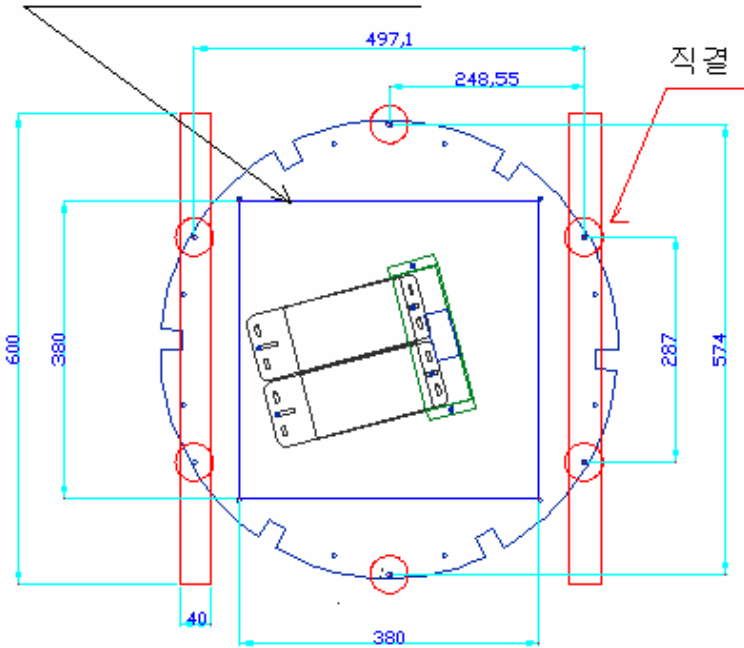
Close of skin : Counterclockwise

Open of skin : Clockwise


C01 취부도 : 무게 6.3 kg

타공 사이즈 : 380x380 mm

직결 나사로 체결 4ea 체결.



천장이 함판일 경우, 추가적으로 보강목을 설치하지 않아도 됨.

Designed by JH LEE	Checked by SM KANG	Approved by - date	File name KF-E-CR-2078L.dwg	File Date 2007.07.01	Scale 1/1
			KIT 도면 기본 양식 v1.0		
			01. KF-E-R-05-v1.0		
			Editor B.		Layout 1/1